

GLAMOUR

ONLY
£2

www.glamour.com

FEBRUARY 2015

"Of course I'm scared"

The British woman fighting Ebola

Jessica Chastain

Why she'd prefer an Oscars dress to a wedding dress

#FiftyShadesfails

From S&M to A&E

How **Kendall** kicked the Kardashian curse

488
Style upgrades

End Monday morning dread for good

- * Heels you can walk in
- * Shoes and bags you need
- * Hair you can do without a hairdresser (promise)

PLUS WIN! A £1350 MULBERRY BAG



Broadchurch

is back

As Season Two hits our screens (series link alert!), GLAMOUR meets the women we'll all be talking – and Tweeting – about. By **Helen Whitaker**



From left
Phoebe
Waller-Bridge,
Olivia Colman,
Jodie Whittaker,
Charlotte Beaumont,
Simone McAullay,
Eve Myles

Photographs by Matt Holyoak

“In the script it said,
‘I don’t know what’s
wrong with me,
I can’t cry.’ We had
to change it because
I couldn’t do a scene
without crying”

Jodie Whittaker



Dress Trager Delaney
at joseph.co.uk; **boots**
(seen on previous page)
dior.com; **bracelet**
studiouribe.co.uk;
ring Jodie’s own

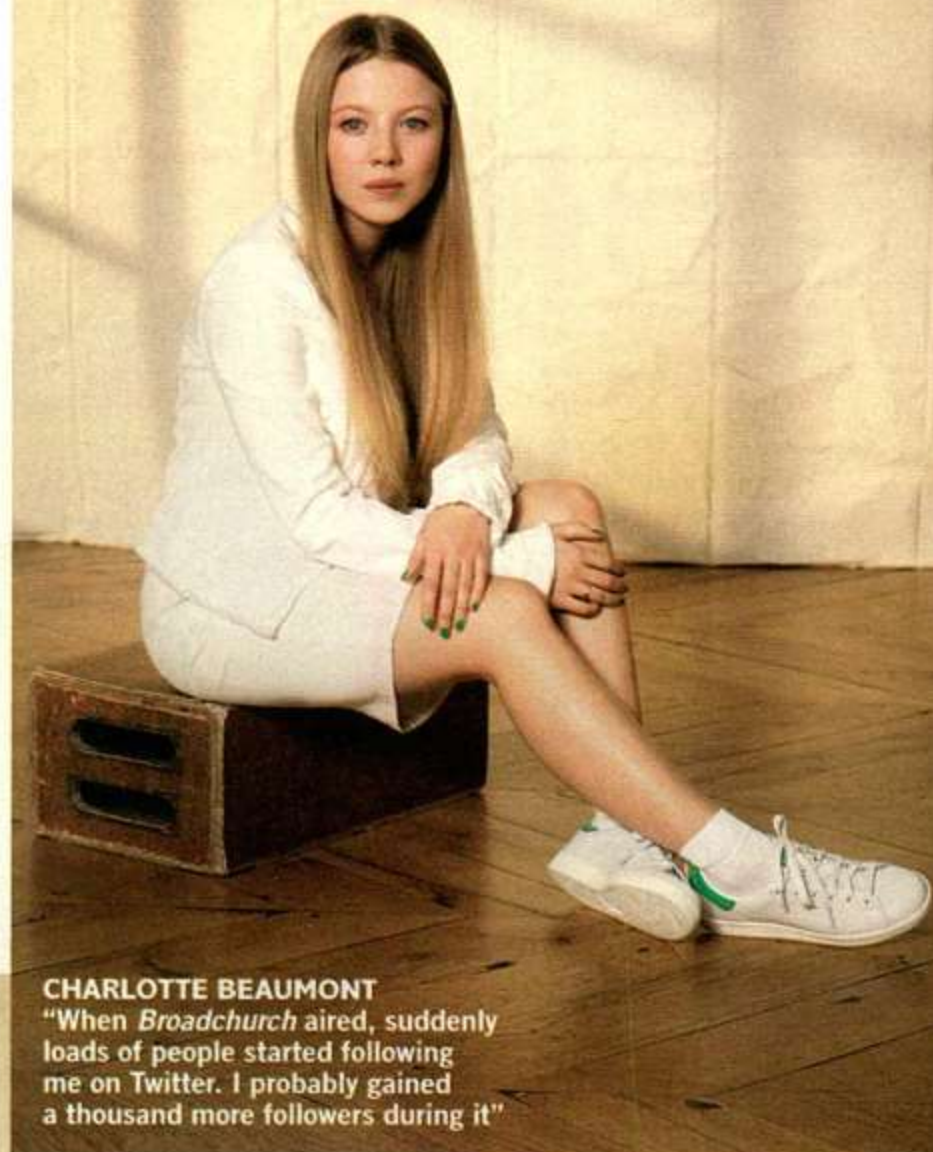
(Opposite page) Phoebe
wears **shirt** Chloé; **skirt**
Isa Arfen at net-a-porter.com;
shoes joseph.co.uk; **jewellery** Phoebe’s
own. Eve wears **jacket**
mugler.co.uk; **shirt** Grace
MMXIII at net-a-porter.com;
trousers Nina Ricci
at brownsfashion.com;
shoes manoloblahnik.com

Charlotte wears **jacket**
Paige Denim at
selfridges.com; **skirt**
allsaints.com; **trainers**
Stan Smith at adidas.co.uk;
necklace (seen on
previous page) Charlotte’s
own; **socks** falke.com

For material, you don't get much more emotional than the murder of a child, and to call the show harrowing is an understatement. Characters spend much of their time tramping across windswept cliffs, streaked with tears, and none more so than Jodie Whittaker, who plays Danny's grieving mother, Beth. "There was a scene that had to be rewritten," she says, "because it said, 'I don't know what's wrong with me, I can't seem to cry.' Well, we had to change that because I couldn't get through any scene without doing it." ("I can't look at Jodie without crying," Olivia agrees later.) "With Season Two, it's a different stage, because grief has its own journey. There are days when the character is numb or angry, more than teary." Which brings us back to the new series. The revelation of the killer's identity (we won't repeat it in case you haven't caught up yet) is a fresh bomb going off in a town already reeling, and as the trailers tease, 'The end is where it begins', it

PHOEBE WALLER-BRIDGE (left) & EVE MYLES

"I was a huge fan-girl and it's always daunting to come into something so successful. I watched it obsessively, then got it on Netflix and watched it again. When I knew whodunnit, I was like, 'Aha! That's so clever.'" *Eve*



CHARLOTTE BEAUMONT
"When *Broadchurch* aired, suddenly loads of people started following me on Twitter. I probably gained a thousand more followers during it"

seems safe to assume Season Two will pick up here. "Chris set up a lot of things we never even thought about in the first series, and now they've come to the fore," says Olivia. "At the read-through we were going, 'You sneaky bastard!'"

Of today's cast, Olivia and Jodie, along with Charlotte Beaumont (who plays Beth's daughter, Chloe) and Simone McAullay, are returnees, while Eve Myles and Phoebe Waller-Bridge play new characters. However, they all greet each other like old friends, nattering and expressing excitement about the American remake of the show (*Gracepoint*, starring an entirely new cast, aside from David Tennant), which, as we shot, had just started airing in the US. For the newbies on the UK set, even the audition process was clandestine; they received only a couple of scenes and a short description of their character. Still, it was enough for them to sign on. "I'd given birth about four days before and my agent called and said, 'You're not up to coming up to London, are you?'" says Eve. "I said, 'No, I've got a child on my breast as we speak and I'm taking some time out.' Then she said it was *Broadchurch*. I said, 'What time do you need me there?'" ©

Broadchurch returns to ITV this month